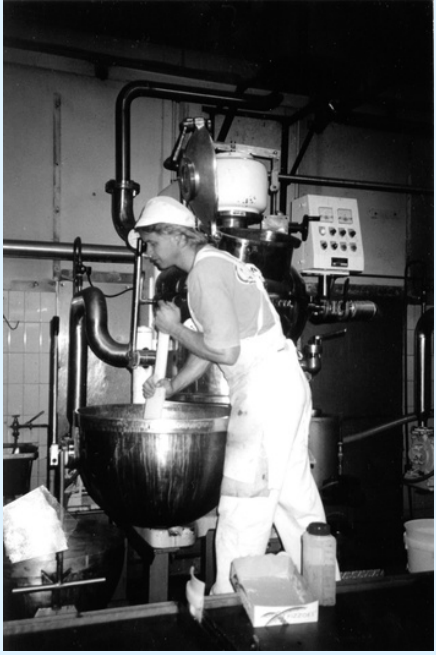


Working in Port Melbourne: From Sherbet bombs to Airplanes



Throughout the 20th century, Port Melbourne's industries employed not just locals, but residents across all of Melbourne. Tell anyone over the age of 50 that you live in Port Melbourne and they are bound to know a parent, cousin, friend or neighbour who worked in the area.

In the 19th and early 20th centuries, factories were co-located with housing. Later, the city was divided into planning zones: residential, commercial and manufacturing, although existing businesses, like Troedels and Swallows, remained on their original sites surrounded by residential and commercial properties.

Lagoon Confectionary 963.07



Weston Langford11 2626: Graham - North Port Down Suburban 5-car Tait 437 M leading - <https://www.westonlangford.com/images/photo/112626/>

There was rapid development of war industries from 1937 to 1945, particularly on the Fisherman's Bend. The workforce included many residents of Port, but the majority came from other suburbs by various means of public transport.

The Flinders Street to Port Melbourne railway line ran frequent trains along the route now used by the 109 Tram. The cable tram service along City Road and Bay Street closed in 1937 to be replaced by a bus service. Other bus routes served Williamstown Road and Fisherman's Bend.

The boom in Australian manufacturing after 1945 led to a great variety of industries in the City of Port Melbourne. This variety is reflected in this display with workplaces ranging from a tailor's shop, a corner store to a confectionery factory and a steel mill.

Several factors combined to end Port's time as a centre of manufacturing. Firms were attracted by the cheaper land available in outer suburbs and later, tariff cuts of the 1980s meant industry moved overseas, it might almost now be called a dormitory suburb.



3662.01 Aerial view of West Gate Bridge Under Construction

Working in Port Melbourne: From Sherbet bombs to Airplanes



Lagoon Confectionary 963.07, Weston Langford11 2626: Graham - North Port Down Suburban 5-car Tait 437 M leading - <https://www.westonlangford.com/images/photo/112626/>,

Learn about Port Melbourne's rich industrial history at the Port Phillip Heritage Centre!

Throughout the 20th century, Port Melbourne's industries employed not just locals, but residents across all of Melbourne. From wartime, to the manufacturing boom that followed in 1945, Port has been a hub for workers across the city.

Come and see the exhibition to learn more about the variety of different trades and factories, life as a worker in Port, and much more!

Where

Emerald Hill Library
195 Bank Street, South Melbourne

When

March 24th to June 24th

No ticket required



3662.01 Aerial view of West Gate Bridge Under Construction

port phillip
heritagecentre

